



Mentor
Graphics®



xpedition™

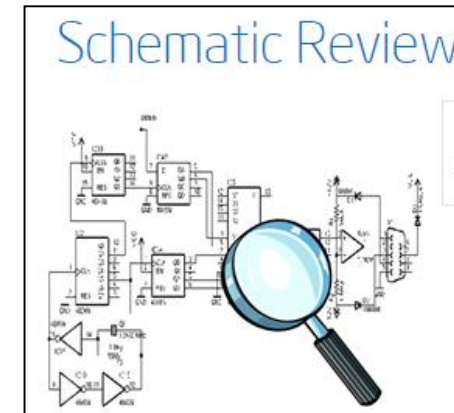
xDX Export SCT Netlist in ISCF Format

Fast, Easy access to Schematic Design Review Services

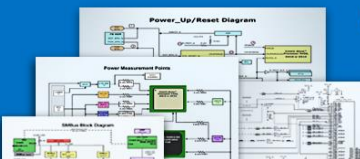

ISD, VX.1.1 2015
Systems Design Division
Mentor Graphics

Mentor / Intel Mutual Customers

- Success in advanced product development demands minimal time to market
- Technology Impacted
 - Server, Microserver & Workstation
 - Embedded (Internet Of Things)
 - Mobile, Netbook, Ultrabook, Tablet, Desktop
- Customers using the latest advanced Intel chipsets request fast access to Intel's Schematic Design Review Services
 - EDIF Schematic not usable:
 - Too cumbersome & complex
 - Manual checking delays analysis results



Design Review Services
Speed your design cycle with Intel's free-of-charge schematic and layout reviews



This service has become a standard part of our offerings to customers across server, mobile, client and embedded designs.

SCT Netlist in ISCF format

- Mentor Board Systems Division developed with SCT Services Group the Export of the SCT Netlist in Intel bespoke format
- Easy to Export SCT Netlist in ISCF format
 - Not all Customers can move projects to VX.1.2
 - Back fitted to EE7.9.4/5, VX.1 and VX.1.1
 - Flow install update required for EE7.9.4 update 40, EE7.9.5 Update 29 and for VX.1 update 8
- All customers have access with xDX Designer license
 - EE Flow & Netlist flow available

Note:

Access to Layout Checking also available

- Embedded (Internet Of Things), Mobile, Server, Microserver & Workstation
- Contact: Erik.E.Erlandson@Intel.Com



Hello Mike,
thanks a lot for this Update.

Best Regards
Andreas



Thanks Mentor team...
Director of HW Development
BDC, ESD, Lenovo



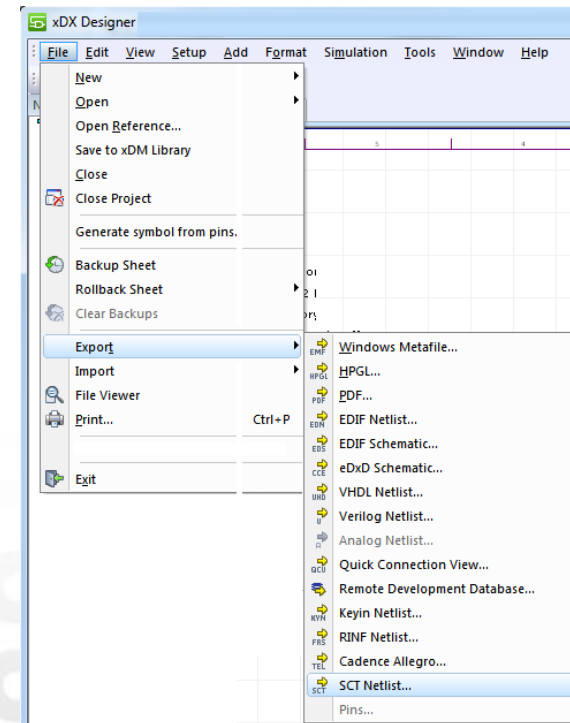
How to Export the SCT Netlist in ISCF format

- The SCT Netlist is generated from a packaged xDX Designer schematic by using a command driven executable in the form below.

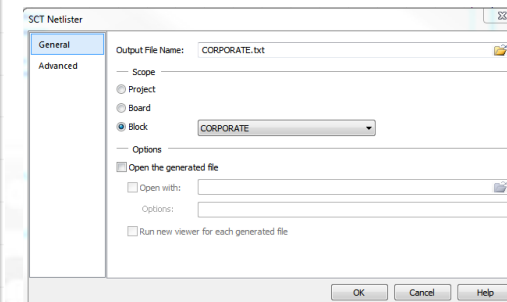
```
%SDD_HOME%\common\win32\bin\SctNetlist.exe -diffpwrandgrnd -block=schematic -out=ISCF_NL-name.txt
```

SCT Netlist Export Options:

- -block=<block_name>
- [-icdbdir=<database_directory>] default = "./database"
- [-icdbsnapshot=<snapshot_name>] default = "DxD"
- [-remoteserver=<server_adress>] default = ""
- [-flowtype=<DX|NETLIST>] default = "DX"
- [-out=<output file>] - Provide name of SCT Netlist.txt
- [-diffpwrandgrnd] - differentiate between power and Ground in Netlist
- [-help]



Coming with
VX.2



- In VX.2 this will become a formal option available in DxDesigner File Export

The logo for Mentor Graphics, featuring the word "Mentor" in a bold, red, sans-serif font above the word "Graphics" in a similar bold, red, sans-serif font. A registered trademark symbol (®) is located to the upper right of "Graphics".

**Mentor
Graphics®**

The logo for xpeditioin, featuring a red icon of a crossed wrench and screwdriver to the left of the word "xpeditioin" in a bold, black, sans-serif font. A trademark symbol (™) is located to the upper right of "xpeditioin".

xpeditioin™