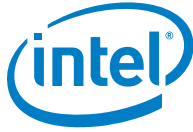


# **How to Create a .cibd/.cce File from Mentor Xpedition for HLDRC**

**White Paper**

---

***August 2017***



INFORMATION IN THIS DOCUMENT IS PROVIDED IN CONNECTION WITH INTEL PRODUCTS. NO LICENSE, EXPRESS OR IMPLIED, BY ESTOPPEL OR OTHERWISE, TO ANY INTELLECTUAL PROPERTY RIGHTS IS GRANTED BY THIS DOCUMENT. EXCEPT AS PROVIDED IN INTEL'S TERMS AND CONDITIONS OF SALE FOR SUCH PRODUCTS, INTEL ASSUMES NO LIABILITY WHATSOEVER AND INTEL DISCLAIMS ANY EXPRESS OR IMPLIED WARRANTY, RELATING TO SALE AND/OR USE OF INTEL PRODUCTS INCLUDING LIABILITY OR WARRANTIES RELATING TO FITNESS FOR A PARTICULAR PURPOSE, MERCHANTABILITY, OR INFRINGEMENT OF ANY PATENT, COPYRIGHT OR OTHER INTELLECTUAL PROPERTY RIGHT.

A "Mission Critical Application" is any application in which failure of the Intel Product could result, directly or indirectly, in personal injury or death. SHOULD YOU PURCHASE OR USE INTEL'S PRODUCTS FOR ANY SUCH MISSION CRITICAL APPLICATION, YOU SHALL INDEMNIFY AND HOLD INTEL AND ITS SUBSIDIARIES, SUBCONTRACTORS AND AFFILIATES, AND THE DIRECTORS, OFFICERS, AND EMPLOYEES OF EACH, HARMLESS AGAINST ALL CLAIMS COSTS, DAMAGES, AND EXPENSES AND REASONABLE ATTORNEYS' FEES ARISING OUT OF, DIRECTLY OR INDIRECTLY, ANY CLAIM OF PRODUCT LIABILITY, PERSONAL INJURY, OR DEATH ARISING IN ANY WAY OUT OF SUCH MISSION CRITICAL APPLICATION, WHETHER OR NOT INTEL OR ITS SUBCONTRACTOR WAS NEGLIGENT IN THE DESIGN, MANUFACTURE, OR WARNING OF THE INTEL PRODUCT OR ANY OF ITS PARTS.

Intel may make changes to specifications and product descriptions at any time, without notice. Designers must not rely on the absence or characteristics of any features or instructions marked "reserved" or "undefined". Intel reserves these for future definition and shall have no responsibility whatsoever for conflicts or incompatibilities arising from future changes to them. The information here is subject to change without notice. Do not finalize a design with this information.

The products described in this document may contain design defects or errors known as errata which may cause the product to deviate from published specifications. Current characterized errata are available on request.

Contact your local Intel sales office or your distributor to obtain the latest specifications and before placing your product order.

Copies of documents which have an order number and are referenced in this document, or other Intel literature, may be obtained by calling 1-800-548-4725, or go to: <http://www.intel.com/design/literature.htm>

Intel and the Intel logo are trademarks or registered trademarks of Intel Corporation or its subsidiaries in the United States and other countries.

\*Other names and brands may be claimed as the property of others.

Copyright © 2017, Intel Corporation. All rights reserved.



# Contents

---

1	Create a .cibd/.cce File.....	5
---	-------------------------------	---

## Figures

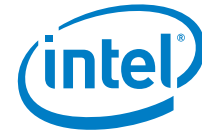
Figure 1.	Open Mentor Graphics Xpedition .....	5
Figure 2.	Export to HyperLynx.....	6
Figure 3.	HyperLynxDRCEXport Log File.....	7
Figure 4.	CIBD/CCE File Path.....	7
Figure 5.	File Directory .....	8



## Revision History

---

Document Number	Revision Number	Description	Revision Date
052889	1.0	<ul style="list-style-type: none"><li>• Initial release</li></ul>	May 2015
052889	1.1	<ul style="list-style-type: none"><li>• TnT references changed to CST</li></ul>	June 2016
052889	1.2	<ul style="list-style-type: none"><li>• Added *.cce file reference</li></ul>	August 2016

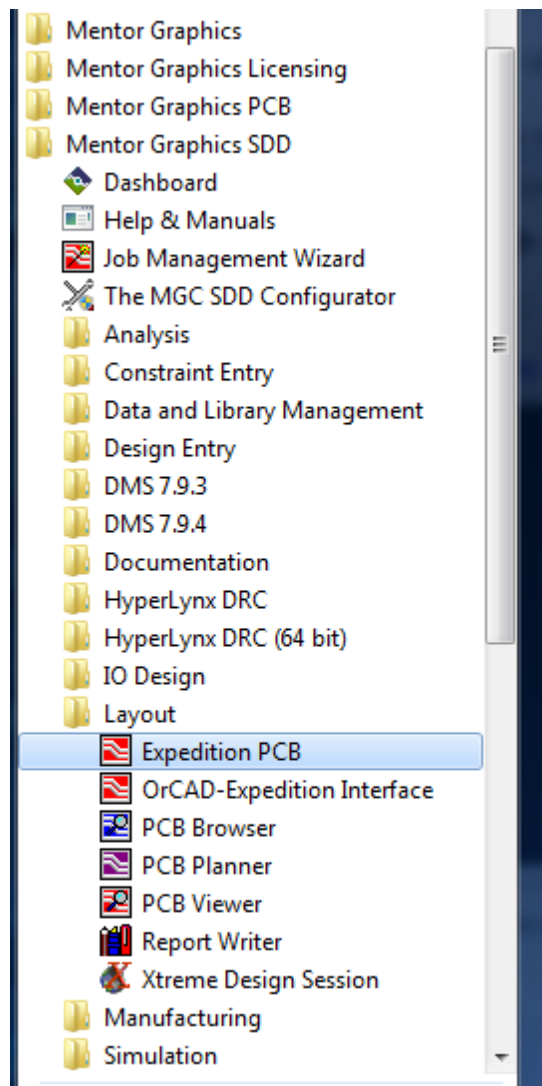


# 1 Create a .cibd/.cce File

---

Open Mentor Graphics Xpedition PCB under Mentor Graphics SDD\Layout\Expedition PCB:

Figure 1. Open Mentor Graphics Xpedition

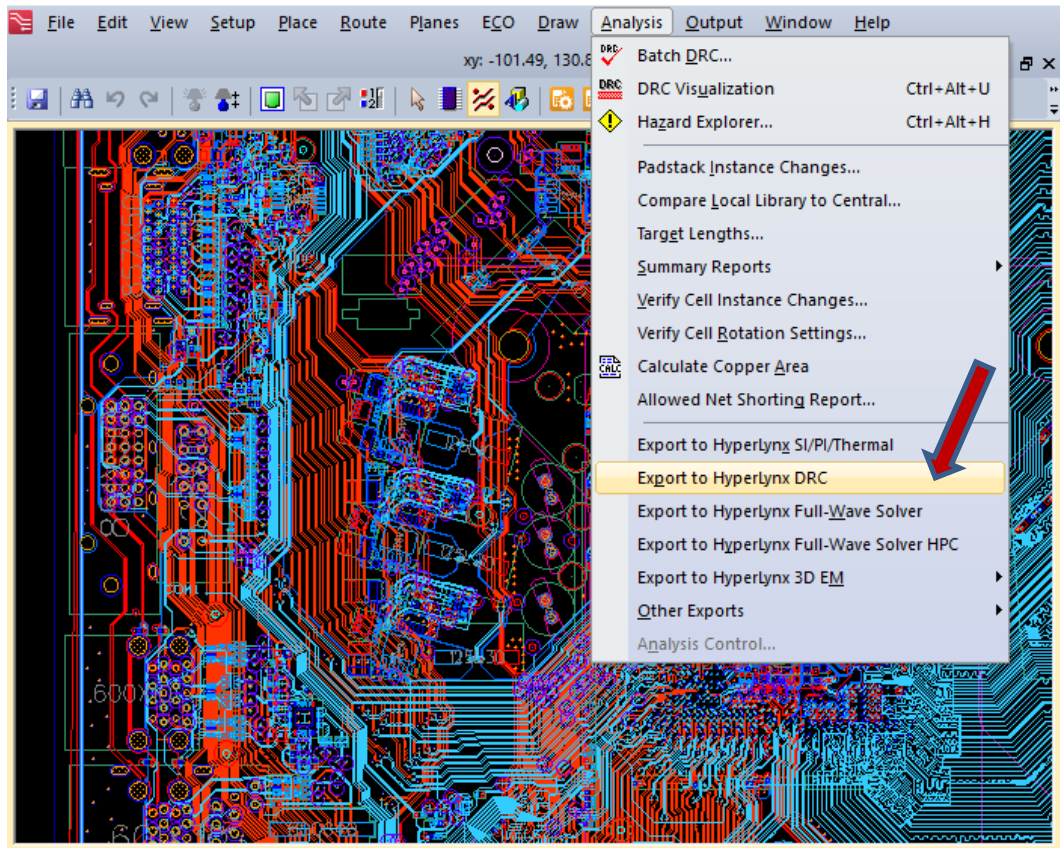


Let the default license take effect when the pop up appears; It defaults to Pinnacle. Wait for several minutes for Expedition to actually open, there is no indication it is happening and if you open it twice that will corrupt the data base and make the file open as Read Only.



From Expedition database:

**Figure 2. Export to HyperLynx**



The Info shows Results in HyperLynxDRCEXport.log; look in the Project Archive\back\_end\LogFiles directory (file name blocked):



Figure 3. HyperLynxDRCEExport Log File

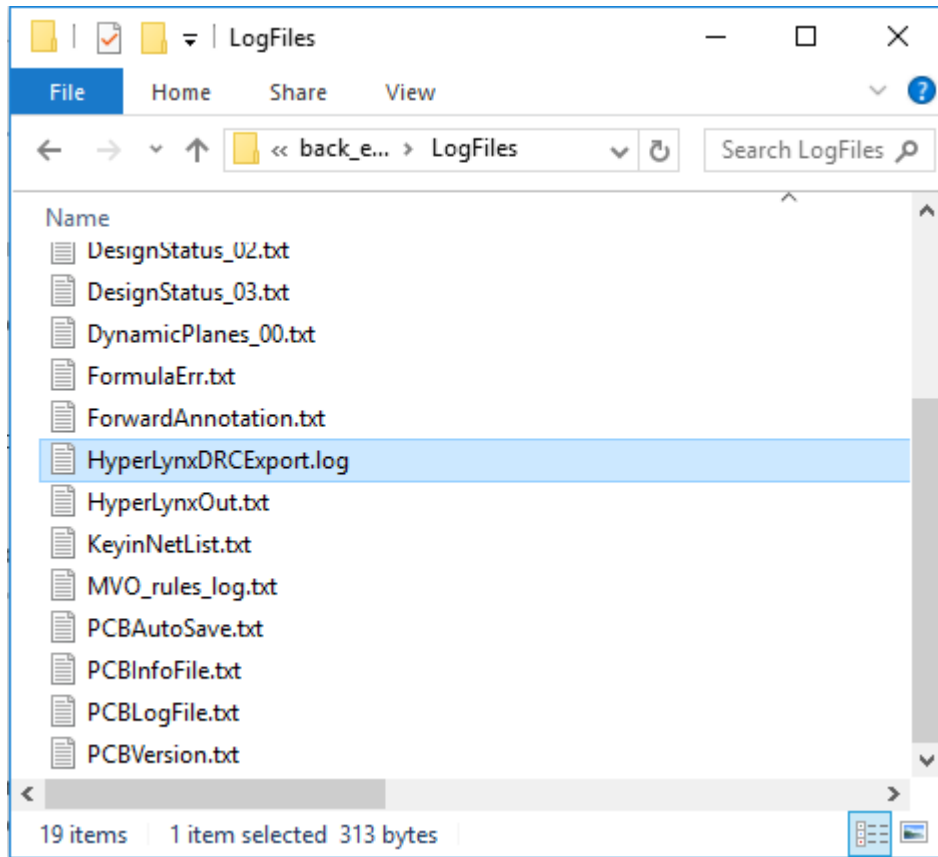
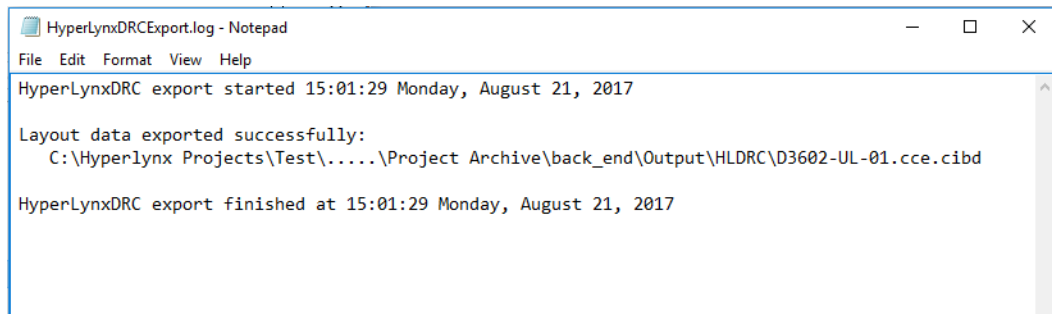
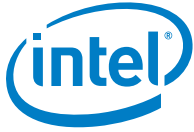


Figure 4. CIBD/CCE File Path

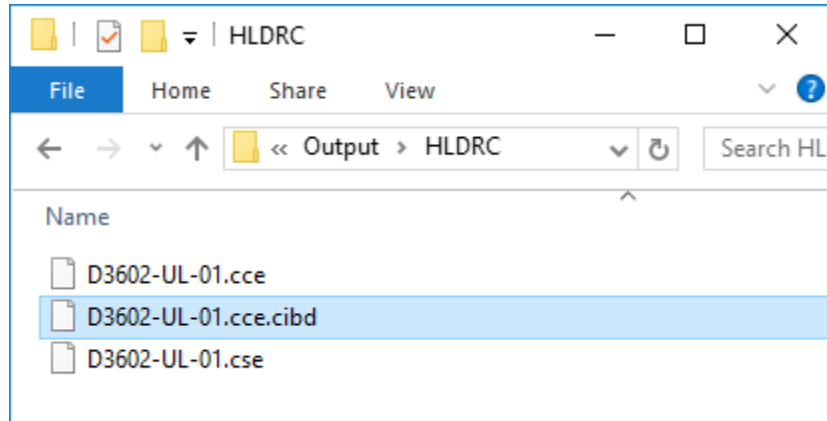
The CIBD file path is shown in the PCB\LogFiles\HyperLYnxDRCEExport.log, the CCE file can be found in the same path:





Both the CIBD and CCE files can be found in the Project Archive\back\_end\Output\HLDRRC directory:

Figure 5. File Directory



Xpedition does not provide the option to rename the file, so the file name matches the .PCB file name in the main directory.